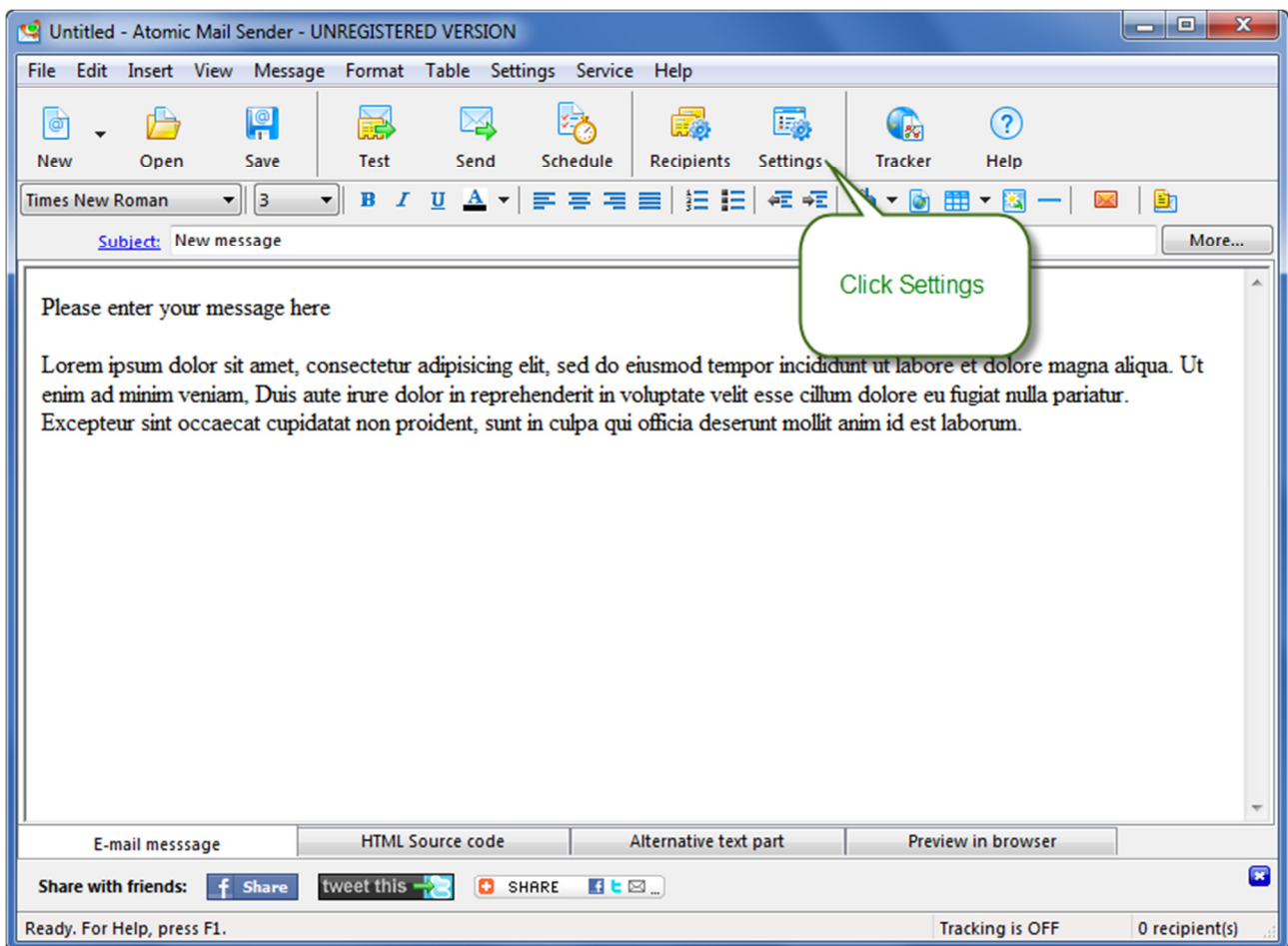
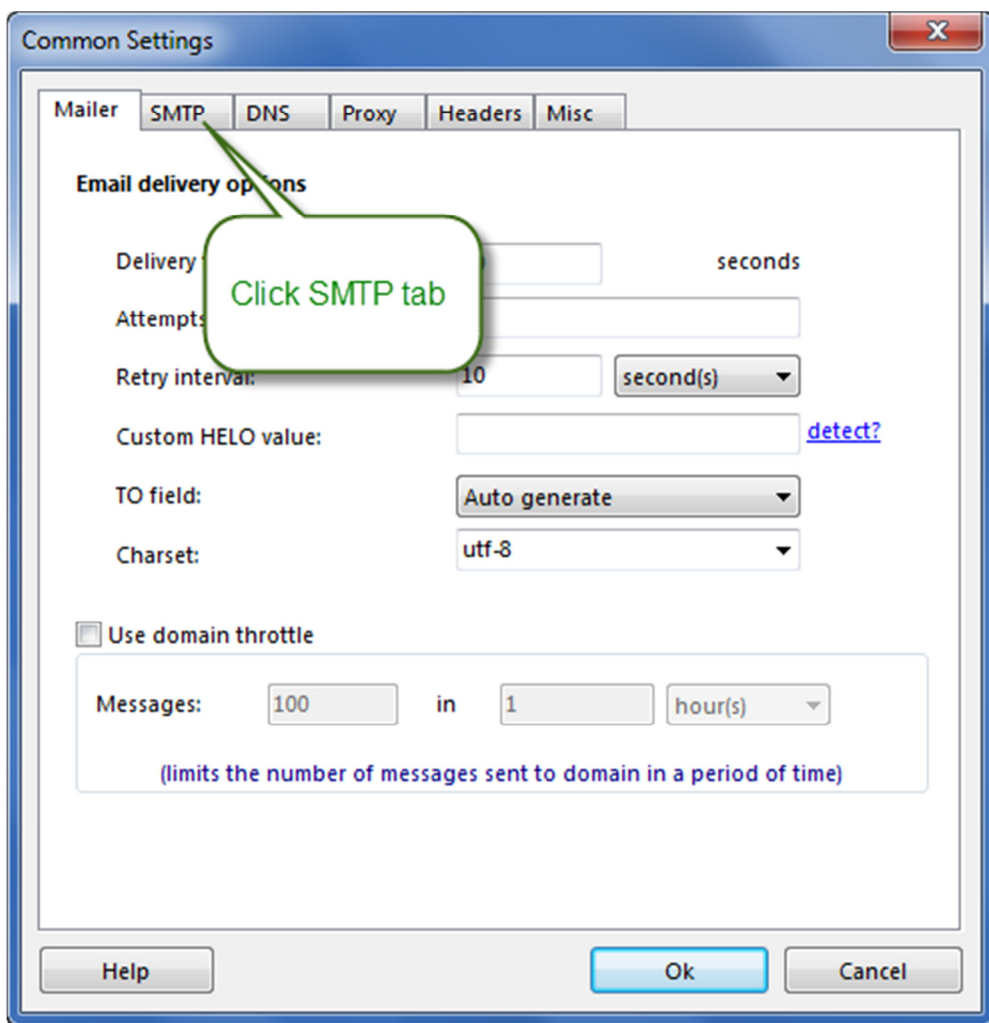


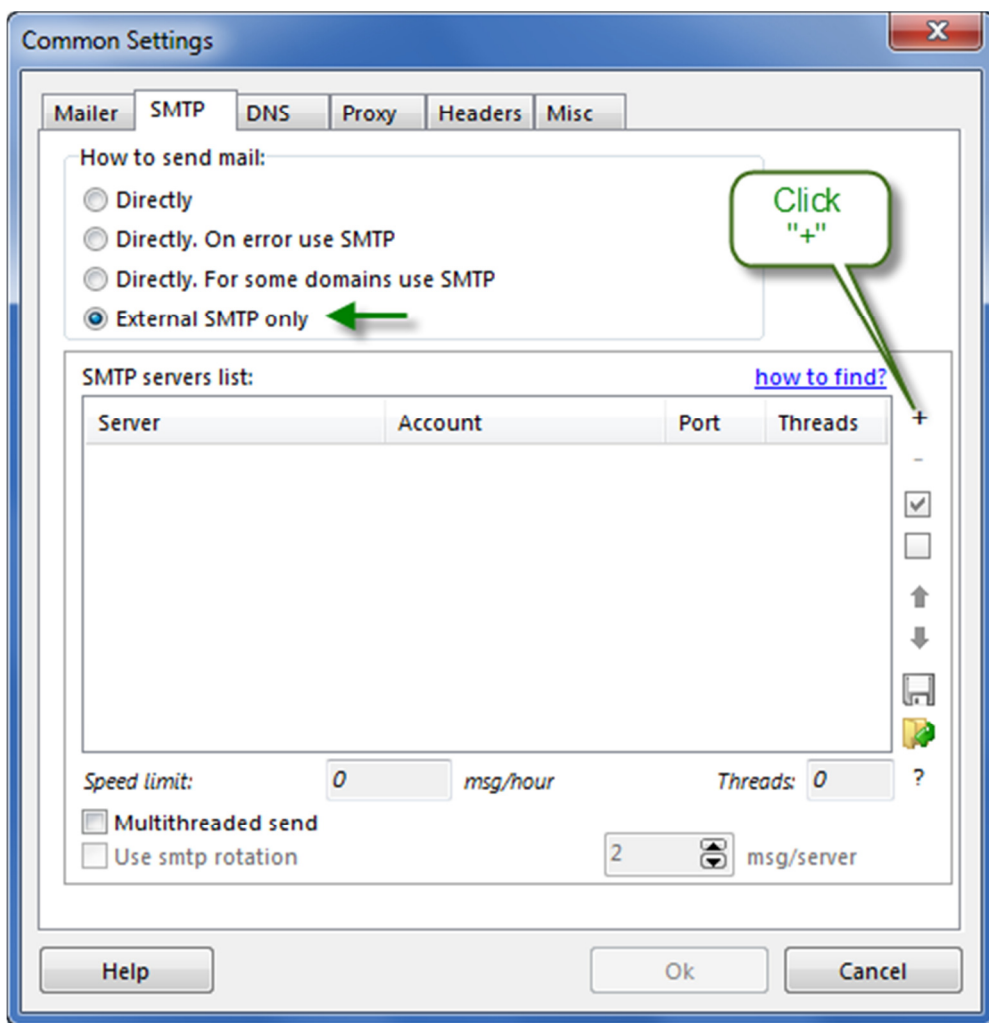


Setting up Atomic Mail Sender SMTP server

Open AMS







SMTP Server

### Edit SMTP server properties

**SMTP server:** → Outgoing SMTP server : 587 Port 587

**Authentication:** → ESMTP - RFC 2554 (recommended) Your SMTP username and password

**Encryption:** →  No  TLS  SSL

**Login / password:** | email / \*\*\*\*\*

**POP server:** : 110

**Sender e-mail:** *Change, if SMTP server requires it*

---

**Connections to server (threads):** 4

**Speed settings**

Wait for: 0 seconds after sending 0 messages

Limit this server to send: 100000 messages/hour

*(or leave 0 to skip the setting)*

[Find my SMTP](#)